

U1000 - FM

Part Code: U1000MKII-FM

The New U1000MKII-FM is a Fixed, clamp-on, pipe mounted, ultrasonic flow meter, which delivers significant installation savings and non-invasive, dry servicing benefits for pipe sizes ranging from 22mm - 180mm (6") OD.

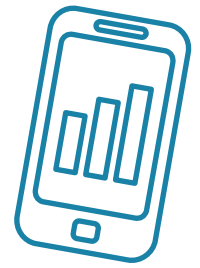


Part Code	Name	Size	Output
MI100CL	Sycous WR1000 Clamp on Flow Meter - A Transducers	22-100mm	PULSE
MI101CL	Sycous WR1000 Clamp on Flow Meter - B Transducers	125-180mm	PULSE
SY912CO	Clamp On Meter Site Visit and Survey	-	-

Specifications

Measurement Technique	Ultrasonic transit time method for flow measurement. Turn Down Ratio: 200:1
Accuracy	+/- 1% - 3% of flow reading for >0.3m/s (1 ft/s).
Flow Velocity Range	0.1m/s - 10m/s (0.3 ft/s - 32 ft/s).
Pipe Range	Available in 2 options. 22mm to 115mm and 125mm to 180mm OD. Note Pipe size is dependent on pipe material and internal diameter.
Water Temp Range	0°C - 85°C (32°F - 185°F).
Temperature sensors	Clamp-on PT100 Class B 4 wire, range 0°C - 85°C (32°F - 185°F), resolution 0.1°C (0.18°F). Minimum delta T is 0.3°C.
Pulse Output	Pulse or Frequency. Pulse for Volume flow and Alarms. Frequency for flow rate. The pulse output can be configured as a loss of signal or low flow alarm.
4-20mA Output	Optional 4-20mA flow proportional output
Modbus Communication	Optional Modbus RTU slave, RS485 serial link hardware layer. Modbus connection cable is 1m.
External Power Supply	12V - 24V +/- 10% AC/DC at 7 watts per unit. Optional plug in 12V power supply.
Electronics Enclosure	IP54
Input/Output Cable	5m x 6 core for power in, 4-20mA and pulse out.
Dimensions	250mm x 48mm x 90mm (10" x 2" x 4") (Electronics + guide rail).

Industries	Recommended for	Application/Use
Building Services	Hot water < 85°C (185°F)	Hot water metering and flow measurement
Energy Management	Chilled water	Flow measurement for heat metering
Water Treatment	Potable water	Chilled water metering and flow measurement
Chemical	De-mineralised water	Flow measurement for chilled water energy metering
Pharmaceutical	Chilled water with Glycol	Potable water metering and flow measurement
Petrochemical		Process water metering and flow measurement
Food		Ultra-pure water measurement



Customer Billing Services

Meter Data Management

Billing Solutions

PAYG Management

Online Account Management

sycous.com



Data Collection

Wired Networks

Wireless Networks

IoT Technologies

MBus & Pulse for any network

sycous.com

Power on configuration:



U1000MKII-FM dimensions:

