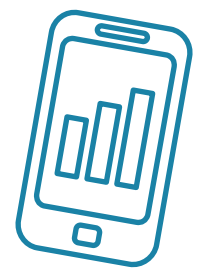


Temperature Sensors

Sycous provide a range of temperature sensor pairs which determine the supply and return temperature in closed water circuits in heating and cooling systems. Depending on the measuring point requirements they can be installed in a pocket or directly in the pipe using a ball valve.



Part Code	Name	Size
ZE045TS	45mm Temperature Sensors Pair, PT500, MID, 5.2, 45m	45
ZE046TS	45mm Temperature Sensors Pair, PT500, MID, 5.2, 45m	45
ZE047TS	45mm Temperature Sensors Pair, PT500, MID, 5.2	45
ZE105TS	105mm Temperature Sensors Pair PT500, MID, 6.0	105
ZE106TS	105mm Temperature Sensors Pair, PT500, MID, 10m	105
ZE140TS	140mm Temperature Sensors Pair, PT500, MID, 6.0, 14	140
ZE141TS	140mm Temperature Sensors Pair, PT500, MID, 10m	140
ZE230TS	230mm Temperature Sensors Pair, PT500, MID, 6.0	230
ZE231TS	230mm Temperature Sensors Pair, PT500, MID, 10m	230
ZE150TS	K150 Temperature Sensors 6x60-230 3m Cable PT500	60 - 230
ZE151TS	K150 Temperature Sensors 6x60-230 10m Cable PT500	60 - 230



Customer Billing Services

Meter Data Management

Billing Solutions

PAYG Management

Online Account Management

sycous.com

Temperature sensor pairs with platinum precision resistance for combination with all standard calculators in measuring points for the consumption of heat and cooling energy

All the versions have an MID type testing certificate in accordance with guideline 2014/32/EU and are supplied with a corresponding conformity assessment. Some selected versions also have a domestic type test certificate for cold metering in Germany and a conformity assessment in accordance with the PTD technical guideline K 7.2 PTB. Thus these versions can be used universally for heat and cold metering and therefore offer a substantial logistical advantage. A new kind of temperature sensor type 'Universal 6 x 60 -230' that can be used for all standard sleeves for temperature sensors with an installation length of 50 to 210 mm and an internal diameter of 6 mm.



Temperature range: **0 to 150 °C**

Version	Diameter (mm)	Installation length (mm)	Cable length (mm)	Fitting sleeve for temperature sensor (mm)	Order no.
PSC (Pocket Short Cable)	5	45	3		118686
	5	45	10		124763
	5.2	45	3		119227
	6	50	3		124765
DS (Direct Short) 27.5		27.5	1.5		143778
DS (Direct Short) 27.5 for heat and cold measurement		27.5	1.5		120504
		27.5	5		124129
DS (Direct Short) 38 for heat and cooling measurement		38	1.5		120503
		38	5		141652
Universal 6 x 60 - 230 for heat and cold measurement, suitable for: Sleeves for temperature sensors 85, 120, and 210 mm with clamping screw. Sleeves for temperature sensors 100 and 150 mm with 1/4" inner thread. Installation points for temperature sensor type 'DS6'	6	60 to 230	3	50 to 210	156295
	6	60 to 230	10	50 to 210	156296



Data Collection

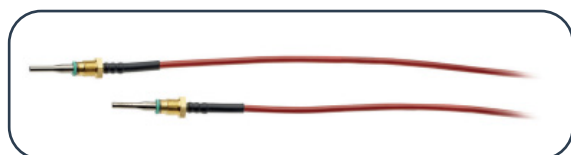
Wired Networks

Wireless Networks

IoT Technologies

MBus & Pulse for any network

sycous.com



DS 27.5



Universal 6 x 60 - 230