

## Zenner ETKD-ETWD

Part Code	Name	Size	Qp (m <sup>3</sup> /h)	Output
ZE015CW	15MM ETKD-N Cold Water Meter	15	2.5	-
SY216CW	15MM Zenner ETKD-M CW Meter Mbus - 80MM Body Le	15	2.5	MBUS
SY215CW	15MM Zenner ETKD-M Cold Water Meter with Mbus	15	2.5	MBUS
SY315CW	15MM Zenner ETKD-M Cold Water Meter with Wireless	15	2.5	WIRELESS MBUS
SY415CW	15MM Zenner ETKD-M Cold Water Meter with LoRa	15	2.5	LoRa
ZE015HW	15MM ETWD-N Hot Water Meter	15	2.5	-
SY215HW	15MM Zenner ETWD-M Hot Water Meter with Mbus	15	2.5	MBUS
SY315HW	15MM Zenner ETWD-M Hot Water Meter with Wireless	15	2.5	WIRELESS MBUS
SY415HW	15MM Zenner ETWD-M Hot Water Meter with LoRa	15	2.5	LoRa
ZE020CW	20MM Single-Jet Cold Water Meter Q3 4	20	4	-
SY220CW	20MM Zenner ETKD-M Cold Water Meter with Mbus	20	4	MBUS
SY320CW	20MM Zenner ETKD-M Cold Water Meter with Wireless	20	4	WIRELESS MBUS
SY420CW	20MM Zenner ETKD-M Cold Water Meter with LoRa	20	4	LoRa
ZE021HW	20MM Single-Jet Hot Water Meter Q3 4	20	4	-
SY220HW	20MM Zenner ETWD-M Hot Water Meter with Mbus	20	2.5	MBUS
SY221HW	20MM Zenner ETWD-M Hot Water Meter with Mbus	20	4	MBUS
SY320HW	20MM Zenner ETWD-M Hot Water Meter with Wireless	20	4	WIRELESS MBUS
SY420HW	20MM Zenner ETWD-M Hot Water Meter with LoRa	20	4	LoRa
ZE002MB	Zenner Wireless Mbus EDC Communication Module	-	-	WIRELESS MBUS
ZE001PU	Pulse Counter 1/10L	-	-	PULSE
ZE001MB	Zenner Mbus EDC Communication Module	-	-	MBUS



The ETKD/ETWD single jet cold water meters by ZENNER are suitable for use with either cold or hot water. The single jet water meter is MID approved for fiscal billing purposes and is available with a range of outputs for remote communication including Pulse, MBus, Wireless MBus and LoRa.



Features:

- Available in either DN15 or DN20
- Available for cold water up to 30° C and for hot water up to 90°C
- MID Approved
- WRAS Approved
- Available with either MBus, Wireless MBus, LoRa or Sigfox

Applications::

- For the consumption measuring of cold potable water up to 30 °C (ETKD) or hot water up to 90 °C (ETWD)



ETKD-M



ETKD-N

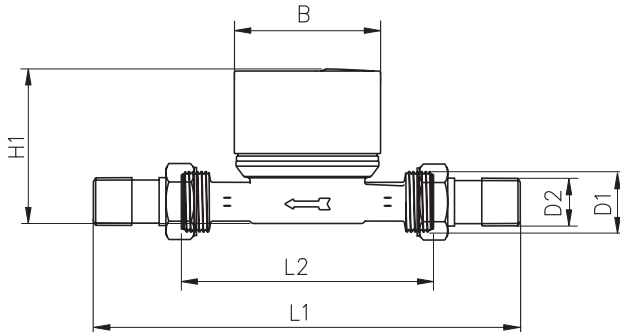
Performance Characteristics:

- Single-jet dry dial meter
- Model “-M” with 8-digit register and modulator disc (1 l/pulse) for nonreactive scanning for radio (wireless M-Bus, LPWAN), M-Bus or pulse
- Model “-N” with 7-digit register and magnetic pointer offers the possibility of remote readout of the meter data via pulser (10 l/pulse)
- Register cap made of high-quality UV-resistant polymer plastic
- Optional: Hermetically sealed glass/copper register IP68 equipped with register cap as a standard
- Register rotatable 355°
- For horizontal and vertical installation (also for ascending and descending pipes)
- Approved in accordance with MID

AMR Options:

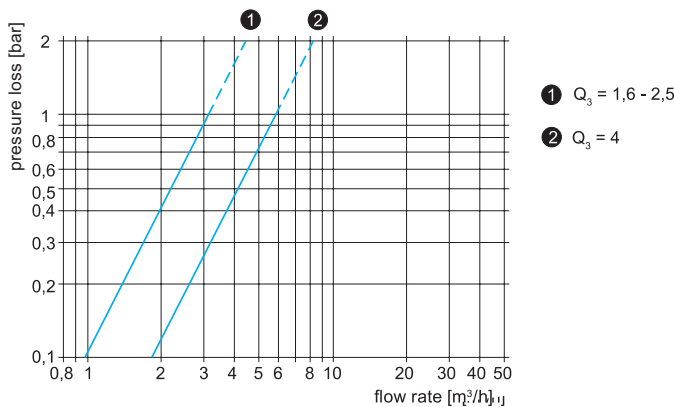
- Model “-N” retrofittable with reed pulser (standard 10 l/pulse, optional 1 l/pulse)
- Model “-M” serially equipped with communication interface for: Electronic Pulser, Wired M-Bus, Radio via Wireless M-Bus and Radio via LPWAN (LoRaWAN™, SIGFOX)

### Weight and Dimensions ETKD-L

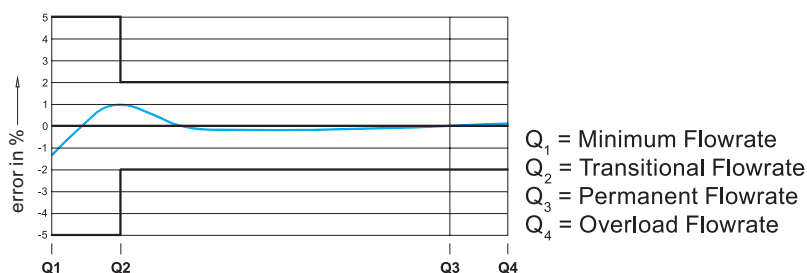


Nominal Diameter (DN)	mm	15	15	15	20	20
Nominal Diameter (DN)	inch	1/2	1/2	1/2	3/4	3/4
Overall Length (L2)	mm	110	80	110/115	130	130
Overall length with connectors approx. (L1)	mm	190	160	190/195	226	226
Thread meter G x B (D1)	inch	3/4	3/4	3/4	1	1
Thread connector (D2)	inch			1/2		
Width approx. (B)	mm			66		
Height approx. (H1)	mm	77	77	77	80	80
Weight ca.	kg	0,43	0,42	0,43/0,44	0,57	0,57

### Typical Pressure Loss Curve



### Typical Accuracy Curve



Managed  
Services

Meter Data  
Management


Billing Solutions

PAYG  
Management

Online Account  
Management

[sycous.com](http://sycous.com)

Technical Data						
Permanent flow rate Q3	m³/h	1.6	2.5	2.5	2.5	4
Comparable to nominal flow (EWG) Qn	m³/h	1.0	1.5	1.5	1.5	2.5
Attainable measuring range Q3/Q1	R	80H/40V	80H/40V	80H/40V	80H/40V	80H/40V
Standard measuring range (¹) Q3/Q1	R	80H/40V	80H/40V	80H/40V	80H/40V	80H/40V
Comparable to metrological class (EWG)	-	B-H/A-V	B-H/A-V	B-H/A-V	B-H/A-V	B-H/A-V
Overload Flowrate Q4	m³/h	2	3.125	3.125	3.125	5
Minimum Flowrate (²) Q1	l/h	20H	31H/63V	31H/63V	31H/63V	50H/100V
Start-up flow rate	l/h	<10	<10	<10	<10	<14
Min Display Range	l	0.02				
Max Display Range	l	R8 99.999,999 R7 99.999,99				
Temperature Range T30	°C	0,1 - 30				
Temperature Range T90	°C	30 - 90				
Operating pressure, max MAP	bar	16				
Pulse value	l/pulse	1/10				
Pressure loss at Q3 Δp	bar	Δ0.63				
Mechanical environmental condition	-	M1				
Climatic condition (³)	°C	5 - 70				
Flow profile sensitivity	-	U0/D0				
(¹) Other measuring ranges (R) on request		(²) The data refer to the standard measuring range			(³) Condensation possible	



**Data Collection**

- Wired Networks
- Wireless Networks
- IoT Technologies

Mbus & Pulse for any network

[sycous.com](http://sycous.com)