

B-Meters GMDM-I

Part Code	Name	Size	Qp (m3/h)	Output
BM015MJ	15mm GMDM-I Multijet Cold Water Meter Pulse	15	2.5	PULSE
BM016MJ	15mm GMDM-I Multijet Cold Water Meter MBus	15	2.5	MBUS
BM015MH	15mm GMDM-I Multijet Hot Water Meter Pulse	15	2.5	PULSE
BM016MH	15mm GMDM-I Multijet Hot Water Meter MBus	15	2.5	MBUS
BM020MJ	20mm GMDM-I Multijet Cold Water Meter Pulse	20	4	PULSE
BM021MJ	20mm GMDM-I Multijet Cold Water Meter MBus	20	4	MBUS
BM020MH	20mm GMDM-I Multijet Hot Water Meter Pulse	20	4	PULSE
BM021MH	20mm GMDM-I Multijet Hot Water Meter MBus	20	4	MBUS
BM025MJ	25mm GMDM-I Multijet Cold Water Meter Pulse	25	6.3	PULSE
BM026MJ	25mm GMDM-I Multijet Cold Water Meter MBus	25	6.3	MBUS
BM025MH	25mm GMDM-I Multijet Hot Water Meter Pulse	25	6.3	PULSE
BM026MH	25mm GMDM-I Multijet Hot Water Meter MBus	25	6.3	MBUS
BM032MJ	32mm GMDM-I Multijet Cold Water Meter Pulse	32	10	PULSE
BM033MJ	32mm GMDM-I Multijet Cold Water Meter MBus	32	10	MBUS
BM032MH	32mm GMDM-I Multijet Hot Water Meter Pulse	32	10	PULSE
BM033MH	32mm GMDM-I Multijet Hot Water Meter MBus	32	10	MBUS
BM040MJ	40mm GMDM-I Multijet Cold Water Meter Pulse	40	16	PULSE
BM041MJ	40mm GMDM-I Multijet Cold Water Meter MBus	40	16	MBUS
BM040MH	40mm GMDM-I Multijet Hot Water Meter Pulse	40	16	PULSE
BM041MH	40mm GMDM-I Multijet Hot Water Meter MBus	40	16	MBUS
BM050MJ	50mm GMDM-I Multijet Cold Water Meter Pulse	50	25	PULSE
BM051MJ	50mm GMDM-I Multijet Cold Water Meter MBus	50	25	MBUS
BM050MH	50mm GMDM-I Multijet Hot Water Meter Pulse	50	25	PULSE
BM051MH	50mm GMDM-I Multijet Hot Water Meter MBus	50	25	MBUS

Multi-jet meter, dry dial, magnetic transmission with 360° rotating lid.

Versions for cold water (0,1°C-50° C) and hot water (30°C-90°C).

Inductive pre-equipment for the installation of data communication modules M-BUS wired and wireless OMS and non-magnetic pulse output.



Technical Data

Size	DN	mm	15	20	25	32	40	50
-	Overload flow rate Q4	m ³ /h	3,125	5	7,875	12,5	20	32,25
-	Permanent flow rate Q3	m ³ /h	2,5	4	6,3	10	16	25
R=100H ↑	Transitional flow rate Q2	l/h	40	64	100,8	160	256	400
R=100H ↑	Minimum flow rate Q1	l/h	25	40	63	100	160	250
R=160H ↑ *	Transitional flow rate Q2	l/h	25	40	63	100	160	250
R=160H ↑ *	Minimum flow rate Q1	l/h	15,63	25	39,38	62,5	100	156,25
R=50VH →	Transitional flow rate Q2	l/h	80	128	201,6	320	512	800
R=50VH →	Minimum flow rate Q1	l/h	50	80	126	200	320	500
-	Sensitivity	l/h	6	6	10	10	20	20
-	Min reading	l	0.05	0.05	0.05	0.05	0.05	0.05
-	Max reading	m ³	99,999	99,999	99,999	99,999	999,999	999,999
-	Max admissible pressure MAP	bar	16	16	16	16	16	16

*Version on request only cold water

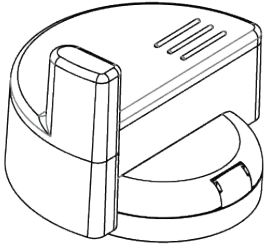


Features:

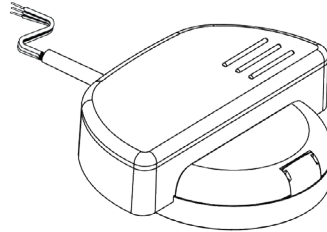
- R100-H ↑ R50-VH →
- Magnetic transmission
- Pre-equipment for pulse emitter device mounting
- Dry dial
- Direct reading on 5 numeric rolls (6 rolls on DN40 and DN50)
- Available for Cold Water up to 50° C or Hot Water up to 90°C
- 360 degrees rotating lid (DN15-DN32) and upon request LoRa & NB-IoT output



Compatible Modules



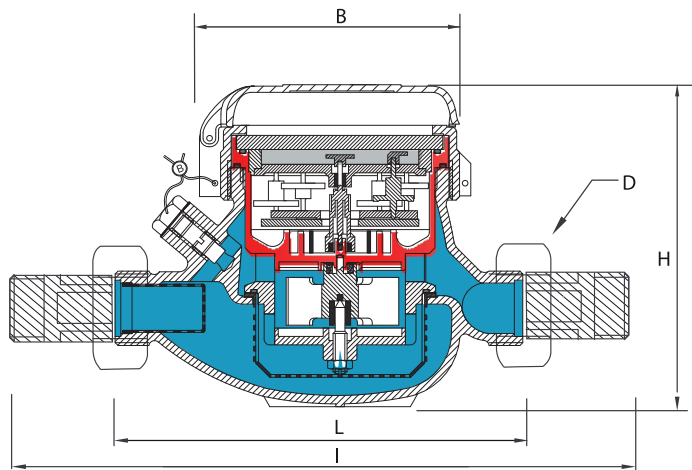
mod. IWM-TX3
M-Bus wireless



mod. IWM-MB3
M-Bus

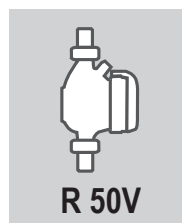
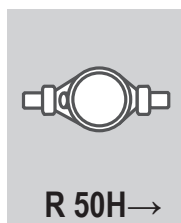
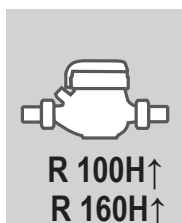
mod. IWM-PL3
PULSE

Dimensions and Weights



Size	mm	15	20	25	32	40	50
L	mm	145-165-190	190	260	260	300	300
I	mm	225-245-270	290	360	380	440	460
H	mm	109	111	117	117	153	172
B	mm	100	100	104	104	126	160
D (Threading)	in	3/4"	1"	1"1/4	1"1/2	2"	2"1/2
Weight	kg	1,18	1,40	2,09	2,18	4,38	4,46
		1,41					9,40

Installation Position



Managed Services

Meter Data Management

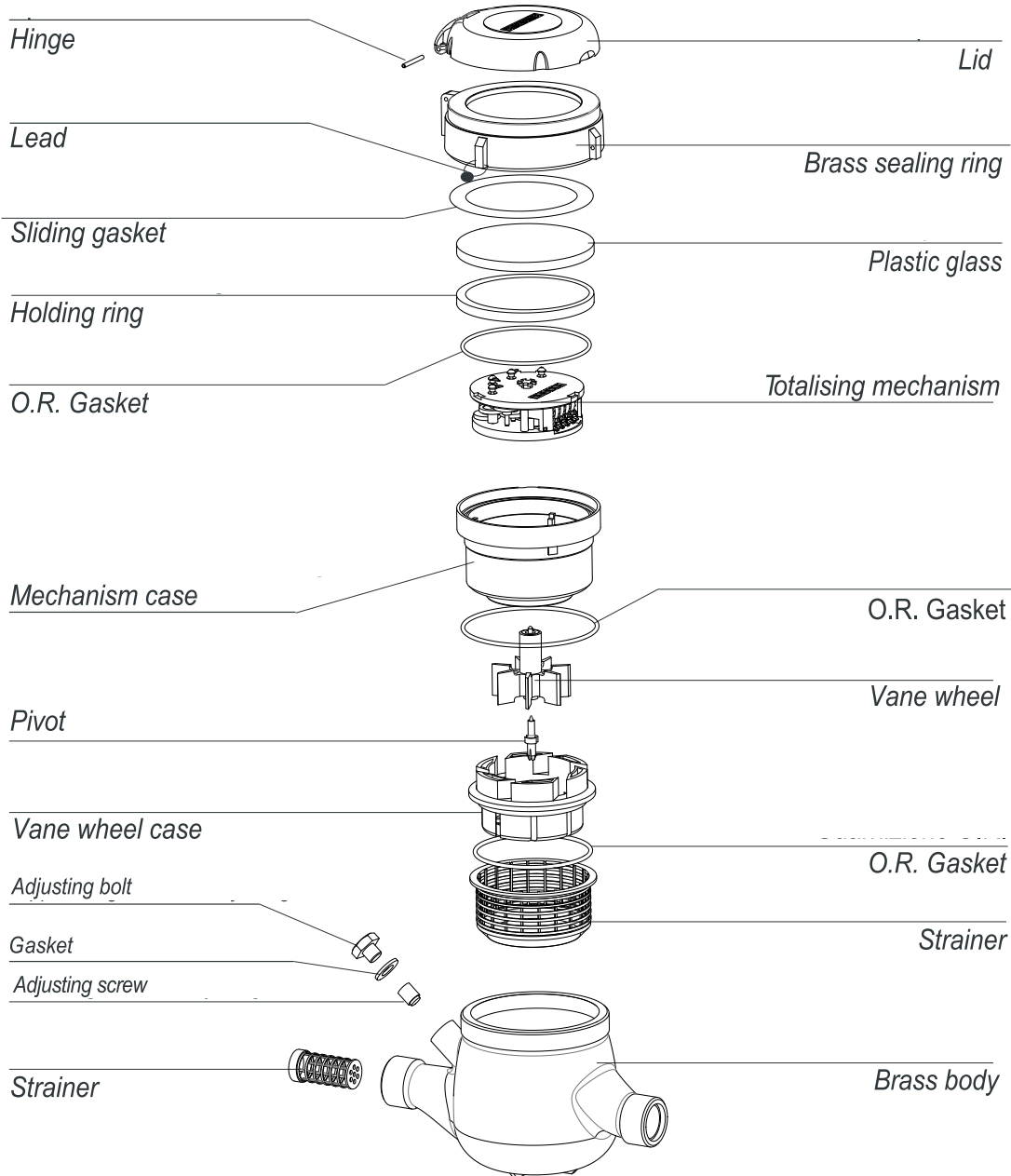
Billing Solutions

PAYG Management

Online Account Management

sycous.com

Parts



Data
Collection

Wired
Networks

Wireless
Networks

IoT
Technologies

Mbus & Pulse for
any network

sycous.com