

# ABB A41 Single Phase Direct

## Part Code: AB082SD

Advanced DIN-rail meter with a large and easy to read back lighted pixel-oriented display. The meter is intended for use in the industry, commercial buildings etc. The meter can be used in 3 or 4 wire systems with a wide voltage range. The meter has several instrumentation values, 25 possible alarms and event logs. Single phase direct connected for active energy. One output for pulses or alarm etc. M-Bus communication. Accuracy class 1.0 (or B for MID meters). The meters is IEC approved + MID approved and verified.



### Dimensions

|                           |          |
|---------------------------|----------|
| Product Net Width         | 70 mm    |
| Product Net Height        | 26.5 mm  |
| Product Net Depth /Length | 65 mm    |
| Product Net Weight        | 0.246 kg |

### Container Information

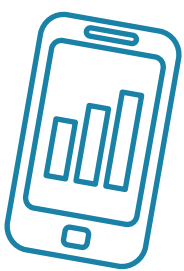
|                               |               |
|-------------------------------|---------------|
| Package Level 1 Units         | 1 piece       |
| Package Level 1 Width         | 100 mm        |
| Package Level 1 Height        | 68 mm         |
| Package Level 1 Depth /Length | 94 mm         |
| Package Level 1 Gross Weight  | 0.318 kg      |
| Package Level 1 EAN           | 7392696002400 |

### Environmental

|                         |   |
|-------------------------|---|
| Ambient Air Temperature | Operation -40 ... +70 °C  |
| RoHS Status             | Following EU Directive 2002/95/EC August 18, 2005 and amendment |

### Additional Information

|                                  |  |
|----------------------------------|--|
| Accuracy                         | Active Energy Class $\pm 1\%$ (or B for MID meters). |
| Communication Interface          | M-Bus  |
| Communication                    | M-Bus TP   |
| Connecting Capacity Main Circuit | 1 ... 25 mm  |
| Current Rating                   | 80 A   |
| Degree of Protection             | IP20   |
| Enclosure Material               | Plastic  |
| Frequency (f)                    | 50 ... 60 Hz   |
| Function                         | Electricity meter                                    |
| Meter Type                       | Direct connected                                     |
| Mounting Type                    | DIN rail   |
| Number of Phases                 | 1  |
| Product Main Type                | A41  |
| Product Name                     | Electricity Meter                                    |



### Managed Services

- Meter Data Management
- Billing Solutions
- PAYG Management
- Online Account Management

[sycous.com](http://sycous.com)

|                    |  |
|--------------------|--|
| Rated Current (In) | 80 A   |
| Rated Voltage (Ur) | (Un) N-L 57,7 ... 288 V                            |
| RoHS Date          | 2011-44  |
| Standards          | IEC 62052-11, IEC 62053-21, EN 50470-1, EN 50470-3 |
| Sub-Function       | Steel  |

### Certificates and Declarations (Document Number)

|                                   |                 |
|-----------------------------------|-----------------|
| Data Sheet, Technical Information | 2CMC484002M0201 |
| Declaration of Conformity - CE    | 2CMC484003D0001 |
| Environmental Information         | 2CMC484004D0001 |
| Instructions and Manuals          | 2CMC484010M4901 |
| RoHS Information                  | 2CMC484006      |

### Classifications

|                            |  |
|----------------------------|--|
| ETIM 4                     | EC001506 - Electronic kilowatt-hour meter                  |
| ETIM 5                     | EC001506 - Kilowatt-hour meter                             |
| ETIM 6                     | EC001506 - Kilowatt-hour meter                             |
| ETIM 7                     | EC001506 - Kilowatt-hour meter                             |
| Object Classification Code | P  |
| WEEE Category              | 5. Small Equipment (No External Dimension More Than 50 cm) |



### Data Collection

Wired Networks

Wireless Networks

IoT Technologies

Mbus & Pulse for any network

[sycous.com](http://sycous.com)

