

ABB A43 Three Phase Direct

Part Code: AB081TD

Advanced DIN-rail meter with a large and easy to read back lighted pixel-oriented display. The meter is intended for use in the industry, commercial buildings etc. The meter can be used in 3 or 4 wire systems with a wide voltage range. The meter has several instrumentation values, 25 possible alarms and event logs. Three phase direct connected for active and reactive energy. Import and export of energy in different registers and one total. One output for pulses or alarm etc. RS-485 communication over Modbus RTU or EQBus. Accuracy class 1.0 (or B for MID meters). The meter is IEC approved + MID approved and verified.



Dimensions

Product Net Width	123 mm
Product Net Height	26.5 mm
Product Net Depth / Length	65 mm
Product Net Weight	0.448 kg

Container Information

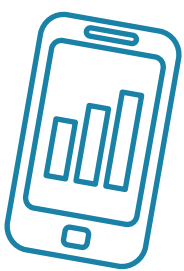
Package Level 1 Units	1 piece
Package Level 1 Width	98 mm
Package Level 1 Height	68 mm
Package Level 1 Depth / Length	144 mm
Package Level 1 Gross Weight	0.538 kg
Package Level 1 EAN	7392696705226

Environmental

Ambient Air Temperature	Operation -40 ... +70 °C
RoHS Status	Following EU Directive 2002/95/EC August 18, 2005 and amendment

Additional Information

Accuracy	Active Energy Class ±1% (or B for MID meters). Reactive Energy Class ±2%.
Communication Interface	Modbus
Communication	MODBUS RTU
Connecting Capacity Main Circuit	1 ... 25 mm²
Current Rating	80 A
Degree of Protection	IP20
Enclosure Material	Plastic
Frequency (f)	50 ... 60 Hz
Function	Electricity meter
Meter Type	Direct connected
Mounting Type	DIN rail
Number of Phases	3
Product Main Type	A43
Product Name	Electricity Meter



Managed Services

- Meter Data Management
- Billing Solutions
- PAYG Management
- Online Account Management

sycous.com

Rated Current (In)	80 A
Rated Voltage (Ur)	(Un) L-L 100 ... 500 V (Un) N-L 57,7 ... 288 V
RoHS Date	2011-44
Standards	IEC 62052-11
Sub-Function	Bronze

Certificates and Declarations (Document Number)

Data Sheet, Technical Information	2CMC484001M0201
Declaration of Conformity - CE	2CMC484003D0001
Environmental Information	2CMC484004D0001
Instructions and Manuals	2CMC484003M0201
RoHS Information	2CMC484006

Classifications

ETIM 4	EC001506 - Electronic kilowatt-hour meter
ETIM 5	EC001506 - Kilowatt-hour meter
ETIM 6	EC001506 - Kilowatt-hour meter
ETIM 7	EC001506 - Kilowatt-hour meter
Object Classification Code	P
WEEE Category	5. Small Equipment (No External Dimension More Than 50 cm)



Data Collection

Wired Networks

Wireless Networks

IoT Technologies

Mbus & Pulse for any network

sycous.com