

# ABB A42 Single Phase CT

## Part Code: AB003SC

Advanced DIN-rail meter with a large and easy to read back lighted pixel-oriented display. The meter is intended for use in the industry, commercial buildings etc. The meter can be used in 3 or 4 wire systems with a wide voltage range. The meter has several instrumentation values, 25 possible alarms and event logs. Three phase transformer connected for active and reactive energy. Import and export of energy in different registers and one total. Resettable register for intermediate values. Internal clock for tariff shift, Min and maximum demand, previous values and event log with timestamps. 8 channel load profile. Four programmable inputs or outputs. Up to the 16th harmonics for pulses or alarm etc. RS-485 communication over Modbus RTU or EQ Bus. Accuracy class 0,5 (or C for MID meters). The meter is IEC approved + MID approved and verified. Version for use in 690 V application.



### Dimensions

Product Net Width	70 mm
Product Net Height	26.5 mm
Product Net Depth / Length	65 mm
Product Net Weight	0.207 kg

### Container Information

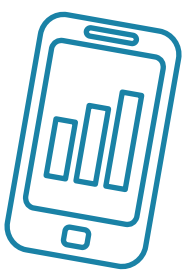
Package Level 1 Units	1 piece
Package Level 1 Width	100 mm
Package Level 1 Height	68 mm
Package Level 1 Depth / Length	94 mm
Package Level 1 Gross Weight	0.279 kg
Package Level 1 EAN	7392696705189

### Environmental

Ambient Air Temperature	Operation -40 ... +70 °C
RoHS Status	Following EU Directive 2002/95/EC August 18, 2005 and amendment

### Additional Information

Accuracy	Active Energy Class $\pm 0,5\%$ (or C for MID meters). Reactive Energy Class $\pm 2\%$
Communication Interface	RS-485
Communication	MODBUS RTU
Connecting Capacity Main Circuit	0.5 ... 10 mm <sup>2</sup>
Current Rating	6 A
Degree of Protection	IP20
Enclosure Material	Plastic
Frequency (f)	50 ... 60 Hz
Function	Electricity meter
Meter Type	Transformer connected
Mounting Type	DIN rail
Number of Phases	1
Product Main Type	A42
Product Name	Electricity Meter



### Managed Services

- Meter Data Management
- Billing Solutions
- PAYG Management
- Online Account Management

[sycous.com](http://sycous.com)

Rated Current (In)	6 A
Rated Voltage (Ur)	(Un) N-L 57,7 ... 288 V
RoHS Date	2011-44
Standards	IEC 62053-23
Sub-Function	Platinum

### Certificates and Declarations (Document Number)

Data Sheet, Technical Information	2CMC484002M0201
Declaration of Conformity - CE	2CMC484002D0001
Environmental Information	2CMC484005D0001
Instructions and Manuals	2CMC484010M4901
RoHS Information	2CMC484006

### Classifications

ETIM 4	EC001506 - Electronic kilowatt-hour meter
ETIM 5	EC001506 - Kilowatt-hour meter
ETIM 6	EC001506 - Kilowatt-hour meter
ETIM 7	EC001506 - Kilowatt-hour meter
Object Classification Code	P
WEEE Category	5. Small Equipment (No External Dimension More Than 50 cm)



### Data Collection

Wired Networks

Wireless Networks

IoT Technologies

Mbus & Pulse for any network

[sycous.com](http://sycous.com)

