

L+G E350 Electric Meter

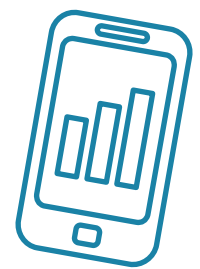
The Landis+Gyr E350 is a wall mounted electricity meter which provides information on a wide range of measurements with a high degree of accuracy. The meter can be ordered for either 1-phase or 3-phase systems as well as with or without a breaker. You can use the E350 in conjunction with Elvaco's integrated meter connectivity modules CMi1020 or CMi1020w, all meter data can be converted to M-Bus or Wireless M-Bus and be collected by a Sycous data collection system.



| Part Code | Name | Phase | Connection | Output |
|-----------|--|--------|------------|---------------|
| EL350SP | L+G E350 Single Phase Direct Electric Meter MBus | Single | Direct | MBus |
| EL351SP | L+G E350 Single Phase Direct Electric Meter MBus c/w Breaker | Single | Direct | MBus |
| EL352SP | L+G E350 Single Phase Direct Electric Meter Wireless MBus | Single | Direct | Wireless MBus |

| | | | | |
|---------|--|-------|--------|---------------|
| EL350TP | L+G E350 Three Phase Direct Electric Meter MBus | Three | Direct | MBus |
| EL351TP | L+G E350 Three Phase Direct Electric Meter MBus Breaker | Three | Direct | MBus |
| EL352TP | L+G E350 Three Phase Direct Electric Meter Wireless MBus | Three | Direct | Wireless MBus |

| Electronics | Functions | Housing |
|--|---|---|
| » Active and reactive measurement | » Installation support | » Glass fibre reinforced, antistatic |
| » Accuracy up to CI 1 resp. CI B (MID) [active energy] and CI 2 [reactive energy] | » Upgradable with modules | » Wiring diagram printed on the meter faceplate |
| » Wide range measurement from starting current to maximum current | » Easy installation and exchange of modules | |
| » Up to 6 rates possible | » Anti-tampering package | |
| » Multi-energy ready (can show values from other electricity, gas, water and heat meters on the display) | | |
| » Large liquid crystal display with max. 8 digits for the value and high resolution | | |
| » Button for display control | | |
| » Optical Interface | | |
| » Optical test output | | |



Customer Billing Services

Meter Data Management

Billing Solutions

PAYG Management

Online Account Management

sycous.com

| Network | E350 (ZCF100 Series 2) | E350 (ZMF100 Series 2) | E350 (ZFF100 Series 2) |
|----------------|------------------------|------------------------|------------------------|
| 1-phase | ✓ | ✓ | |
| 3-phase 3-wire | | | ✓ |
| 3-phase 4-wire | | ✓ | |

| Energy Type | E350 (ZCF100 Series 2) | E350 (ZMF100 Series 2) | E350 (ZFF100 Series 2) |
|-----------------|------------------------|------------------------|------------------------|
| Active Energy | ✓ | ✓ | ✓ |
| Reactive Energy | ✓ | ✓ | ✓ |

| Measuring Accuracy | E350 (ZCF100 Series 2) | E350 (ZMF100 Series 2) | E350 (ZFF100 Series 2) |
|---------------------------------|------------------------|------------------------|------------------------|
| Class 2 (IEC) / Class A (MID) | ✓ | ✓ | ✓ |
| Class 1 (IEC) / Class B (MID) | ✓ | ✓ | ✓ |
| Class 2 (IEC) (reactive energy) | ✓ | ✓ | ✓ |

Voltage

| | | | |
|---------------------------------|---|---|---|
| Class 2 (IEC) / Class A (MID) | ✓ | ✓ | |
| Class 1 (IEC) / Class B (MID) | | ✓ | |
| Class 2 (IEC) (reactive energy) | | ✓ | ✓ |

Current

| | | | |
|---|---|---|---|
| I _b ; I _{ref} = 5 A, 10 A, 15 A, 20 A | ✓ | ✓ | ✓ |
| I _{max} = 60 A, 80 A, 100 A | ✓ | ✓ | ✓ |

Frequency

| | | | |
|------------------------|---|---|---|
| f _n = 50 Hz | ✓ | ✓ | ✓ |
|------------------------|---|---|---|

Channels

| | | | |
|------------------------|---|---|---|
| 8 measurement channels | ✓ | ✓ | ✓ |
|------------------------|---|---|---|

Display

| | | | |
|-------------------------------------|---|---|---|
| Digit size 8mm | ✓ | ✓ | ✓ |
| 8 digits | ✓ | ✓ | ✓ |
| up to 94 displays in sum in 2 lists | ✓ | ✓ | ✓ |

Tariffing (external)

| | | | |
|---------------|---|---|---|
| Single rate | ✓ | ✓ | ✓ |
| Double rate | ✓ | ✓ | ✓ |
| Up to 4 rates | ✓ | ✓ | ✓ |
| Up to 6 rates | ✓ | ✓ | ✓ |

Miscellaneous

| | | | |
|-----------------------------------|---|---|---|
| Disconnecter (optional) | ✓ | ✓ | ✓ |
| Anti-tampering package (Optional) | ✓ | ✓ | ✓ |
| Multi-energy display* | ✓ | ✓ | ✓ |
| Display push button | ✓ | ✓ | ✓ |
| Vector display | ✓ | ✓ | ✓ |
| Obis code display | ✓ | ✓ | ✓ |



Data Collection

Wired Networks

Wireless Networks

IoT Technologies

Mbus & Pulse for any network

sycous.com

