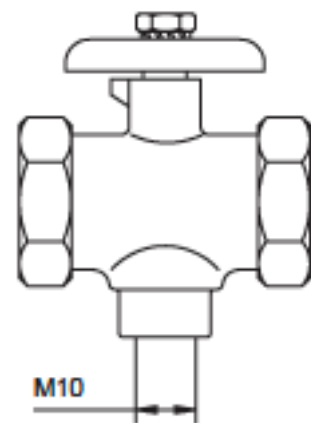
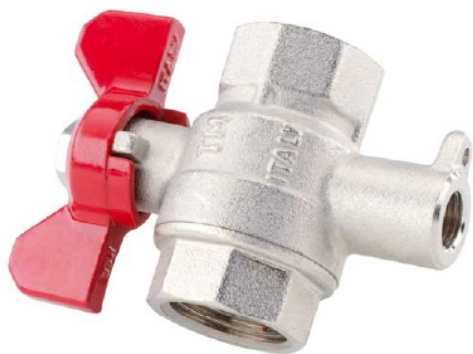


Ball Valves

Part Code: Ball Valve with M10x1

The ball valve with drill bore M10x1 is ideally suited to the installation of direct sensors. If the ball valve is closed then the temperature sensor can be exchanged without draining the heating water. When the ball valve is open the sensor is surrounded by the heat carrier and can react quickly and reliably to changes in temperature.



Part Code	Name	Size	Connection	Sensor Connection
FE015BV	15mm Ball Valve	DN15	1/2"	M10
FE020BV	20mm Ball Valve	DN20	3/4"	M10
FE025BV	25mm Ball Valve	DN25	1"	M10
FE030BV	30mm Ball Valve	DN30	1 1/4"	M10
FE040BV	40mm Ball Valve	DN40	1 1/2"	M10

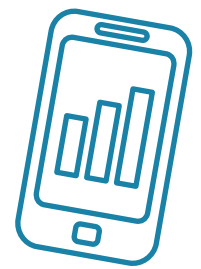
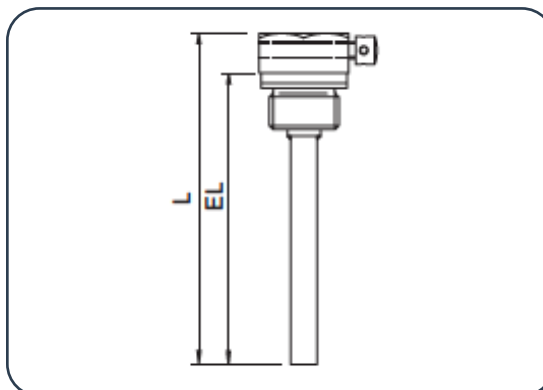
Description	Size	Order no.
Ball valve with temperature sensor mounting M10x1	IG 1/2"	100531
	IG 3/4"	100533
	IG 1"	102170
	IG 1 1/4"	115831
	IG 1 1/2"	107330

Version	Installation	
	length EL (mm)	Order no.
Stainless steel with 1/2" connection thread and side clamping screw, including copper seal	85	110549
	120	110550
	155	137720
	210	112702
Stainless steel with 1/2" connection thread and 1/4" inner thread, including copper seal	91	104560
	146	104417

The stainless steel sleeves for temperature sensors are suitable for temperature sensors with an external diameter of 6mm and a length from 105mm and for the type 'Universal 6 x 60 - 230'.



When new measuring points are designed they are generally used from a nominal flow of $q_p 10 \text{ m}^3/\text{h}$.



Customer Billing Services

- Meter Data Management
- Billing Solutions
- PAYG Management
- Online Account Management
- sycous.com



Data Collection

- Wired Networks
- Wireless Networks
- IoT Technologies
- Mbus & Pulse for any network
- sycous.com