

# ABB B21 Single Phase Direct

## Part Code: AB067SD

Advanced compact DIN-rail meter with an easy to read back lighted display. The meter is intended for use in commercial or residential buildings etc. The meter can be used in 3 or 4 wire systems. The meter has several instrumentation values, 26 possible alarms and event logs. Single phase direct connected for active energy. One output for pulses or alarm etc. M-Bus communication. Accuracy class 1.0 (or B for MID meters). The meter is IEC approved + MID approved and verified.



Part Code	Name	Phase	Connection	Output
AB065SD	ABB Single Phase Direct Electricity Meter 65A - Pu	SINGLE	DIRECT	PULSE
AB066SD	ABB Single Phase Direct Electricity Meter 65A - RS	SINGLE	DIRECT	RS485
AB067SD	ABB Single Phase Direct Electricity Meter 65A - Mb	SINGLE	DIRECT	MBUS/PULSE

### Dimensions

Product Net Width	35 mm
Product Net Height	26.5 mm
Product Net Depth / Length	65 mm
Product Net Weight	0.15 kg

### Container Information

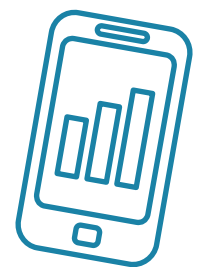
Package Level 1 Units	1 piece
Package Level 1 Width	70 mm
Package Level 1 Height	50 mm
Package Level 1 Depth / Length	102 mm
Package Level 1 Gross Weight	0.20 kg
Package Level 1 EAN	7392696001519

### Environmental

Ambient Air Temperature	Operation -40 ... +70 °C
RoHS Status	Following EU Directive 2002/95/EC August 18, 2005 and amendment

### Additional Information

Accuracy	Active Energy Class ±1% (or B for MID meters).
Communication Interface	M-bus
Communication	M-Bus TP



### Customer Billing Services

Meter Data Management

Billing Solutions

PAYG Management

Online Account Management

[sycous.com](http://sycous.com)



Connecting Capacity Main Circuit	1 ... 25 mm <sup>2</sup>
Current Rating	65 A
Degree of Protection	IP20
Enclosure Material	Plastic
Frequency (f)	50/60 Hz
Function	Electricity meter
Meter Type	Direct connected
Mounting Type	DIN rail
Number of Phases	1
Product Main Type	B21
Product Name	Electricity Meter
Rated Current (In)	65 A
Rated Voltage (Ur)	(Un) N-L 220 ... 240 V
RoHS Date	2012-36
Standards	IEC 62052-11
Sub-Function	Steel

### Certificates and Declarations (Document Number)

Data Sheet, Technical Information	2CMC485004M0201
Declaration of Conformity - CE	2CMC485001D0001
Environmental Information	2CMC485004D0001
Instructions and Manuals	2CMC485019M0201
RoHS Information	2CMC485005

### Classifications

ETIM 4	EC001506 - Electronic kilowatt-hour meter
ETIM 5	EC001506 - Kilowatt-hour meter
ETIM 6	EC001506 - Kilowatt-hour meter
ETIM 7	EC001506 - Kilowatt-hour meter
Object Classification Code	P
WEEE Category	5. Small Equipment (No External Dimension More Than 50 cm)



### Data Collection

Wired Networks

Wireless Networks

IoT Technologies

Mbus & Pulse for network

[sycous.com](http://sycous.com)

