

ABB B23 Three Phase Direct

Part Code: AB066TD

Advanced compact DIN-rail meter with an easy to read back lighted display. The meter is intended for use in commercial or residential buildings etc. The meter can be used in 3 or 4 wire systems. The meter has several instrumentation values, 26 possible alarms and event logs. Three phase direct connected for active and reactive energy. Import and export of energy in different registers and one total. One output for pulses or alarm etc. RS-485 communication over Modbus RTU or EQ Bus. Accuracy class 1.0 (or B for MID meters). The meter is IEC approved + MID approved and verified.



Part Code	Name	Phase	Connection	Output
AB065TD	ABB Three Phase Direct Electricity Meter 65A - Pul	THREE	DIRECT	PULSE
AB066TD	ABB Three Phase Direct Electricity Meter 65A - RS4	THREE	DIRECT	RS485
AB083TD	ABB Three Phase Direct Electricity Meter 65A - Mbu	THREE	DIRECT	MBUS/ PULSE

Dimensions

Product Net Width	70 mm
Product Net Height	26.5 mm
Product Net Depth / Length	65 mm
Product Net Weight	0.32 kg

Container Information

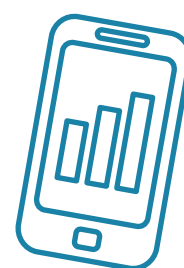
Package Level 1 Units	1 piece
Package Level 1 Width	100 mm
Package Level 1 Height	68 mm
Package Level 1 Depth / Length	94 mm
Package Level 1 Gross Weight	0.39 kg
Package Level 1 EAN	7392696001663

Environmental

Ambient Air Temperature	Operation -40 ... +70 °C
RoHS Status	Following EU Directive 2002/95/EC August 18, 2005 and amendment

Additional Information

Accuracy	Active Energy Class ±1% (or B for MID meters). Reactive Energy Class ±2%.
Communication Interface	Modbus
Communication	MODBUS RTU
Connecting Capacity Main Circuit	1 ... 25 mm ²
Current Rating	65 A



Customer Billing Services

Meter Data Management

Billing Solutions

PAYG Management

Online Account Management

sycous.com



Current Rating	65 A
Degree of Protection	IP20
Enclosure Material	Plastic
Frequency (f)	50/60 Hz
Function	Electricity meter
Meter Type	Direct connected
Mounting Type	DIN rail
Number of Phases	3
Product Main Type	B23
Product Name	Electricity Meter
Rated Current (In)	65 A
Rated Voltage (Ur)	(Un) N-L 220 ... 240 V (Un) L-L 380 ... 415 V
RoHS Date	2012-36
Standards	IEC 62053-23
Sub-Function	Bronze

Certificates and Declarations (Document Number)

Data Sheet, Technical Information	2CMC485003M0201
Declaration of Conformity - CE	2CMC485001D0001
Environmental Information	2CMC485003D0001
Instructions and Manuals	2CMC485019M0201
RoHS Information	2CMC485006

Classifications

ETIM 4	EC001506 - Electronic kilowatt-hour meter
ETIM 5	EC001506 - Kilowatt-hour meter
ETIM 6	EC001506 - Kilowatt-hour meter
ETIM 7	EC001506 - Kilowatt-hour meter
Object Classification Code	P
WEEE Category	5. Small Equipment (No External Dimension More Than 50 cm)



Data Collection

Wired Networks

Wireless Networks

IoT Technologies

Mbus & Pulse for any network

sycous.com

