

ABB C11 Single Phase Direct

Part Code: AB040SD

Basic compact meters for use in residential applications for single or multi family houses or in stand alone applications. To be used in a four wire system. The meter has instrumentation values. Single phase direct connected for active energy. One output for pulses or alarm etc. Accuracy class 1.0 (or B for MID meters). The meter is IEC approved + MID approved and verified. 100 imp/kWh.



Part Code	Name	Phase	Connection	Output
AB040SD	ABB Single Phase Direct Electricity Meter 40A - Pu	SINGLE	DIRECT	PULSE

Dimensions

Product Net Width	17.5 mm
Product Net Height	26.5 mm
Product Net Depth / Length	65 mm
Product Net Weight	0.066 kg

Container Information

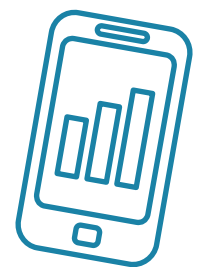
Package Level 1 Units	1 piece
Package Level 1 Width	32 mm
Package Level 1 Height	84 mm
Package Level 1 Depth / Length	117 mm
Package Level 1 Gross Weight	0.123 kg
Package Level 1 EAN	7392696000147

Environmental

Ambient Air Temperature	Operation -25 ... +70 °C
RoHS Status	Following EU Directive 2002/95/EC August 18, 2005 and amendment

Additional Information

Accuracy	Active Energy Class ±1% (or B for MID meters).
Communication Interface	None
Communication	Pulse output



Customer Billing Services

Meter Data Management

Billing Solutions

PAYG Management

Online Account Management

sycous.com

Connecting Capacity Main Circuit	0.5 ... 10 mm ²
Current Rating	40 A
Degree of Protection	IP20
Enclosure Material	Plastic
Frequency (f)	50/60 Hz
Function	Electricity meter
Meter Type	Direct connected
Mounting Type	DIN rail
Number of Phases	1
Product Main Type	C11
Product Name	Electricity Meter
Rated Current (In)	40 A
Rated Voltage (Ur)	(Un) N-L 230 ... 240 V
RoHS Date	2011-44
Standards	IEC 62052-11, IEC 62053-21, EN 50470-1, EN 50470-3
Sub-Function	Steel

Certificates and Declarations (Document Number)

Data Sheet, Technical Information	2CMC486001M0201
Declaration of Conformity - CE	2CMC486001D0001
Environmental Information	2CMC486005D0001
Instructions and Manuals	2CMC486006M0201
RoHS Information	2CMC486003

Classifications

ETIM 4	EC001506 - Electronic kilowatt-hour meter
ETIM 5	EC001506 - Kilowatt-hour meter
ETIM 6	EC001506 - Kilowatt-hour meter
ETIM 7	EC001506 - Kilowatt-hour meter
Object Classification Code	P
WEEE Category	5. Small Equipment (No External Dimension More Than 50 cm)



Data Collection

Wired Networks

Wireless Networks

IoT Technologies

Mbus & Pulse for network

sycous.com

